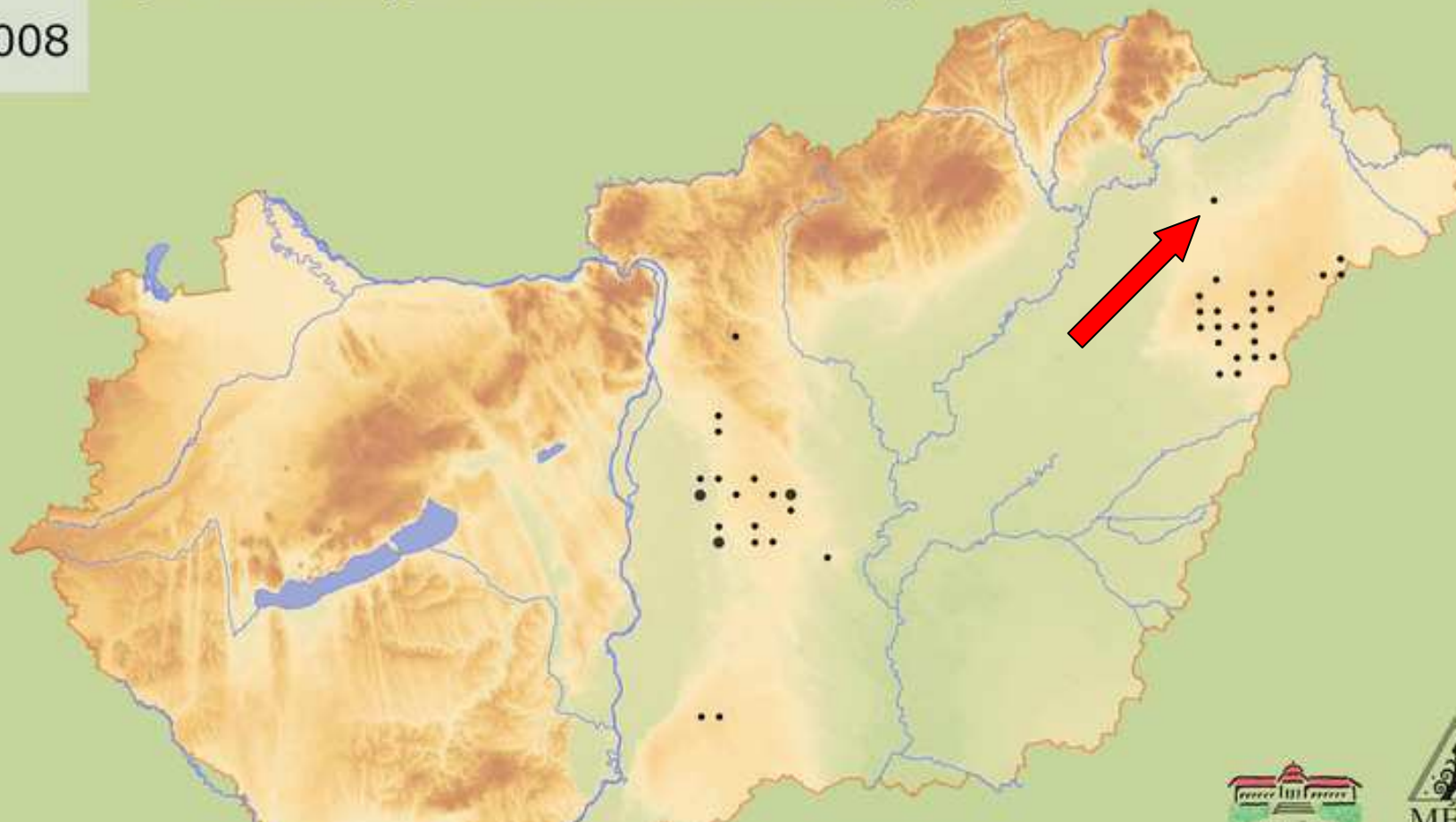




# M4 Nyílt, gyepekkel mozaikos homoki tölgyesek - Open sand steppe oak woodlands with openings

2008



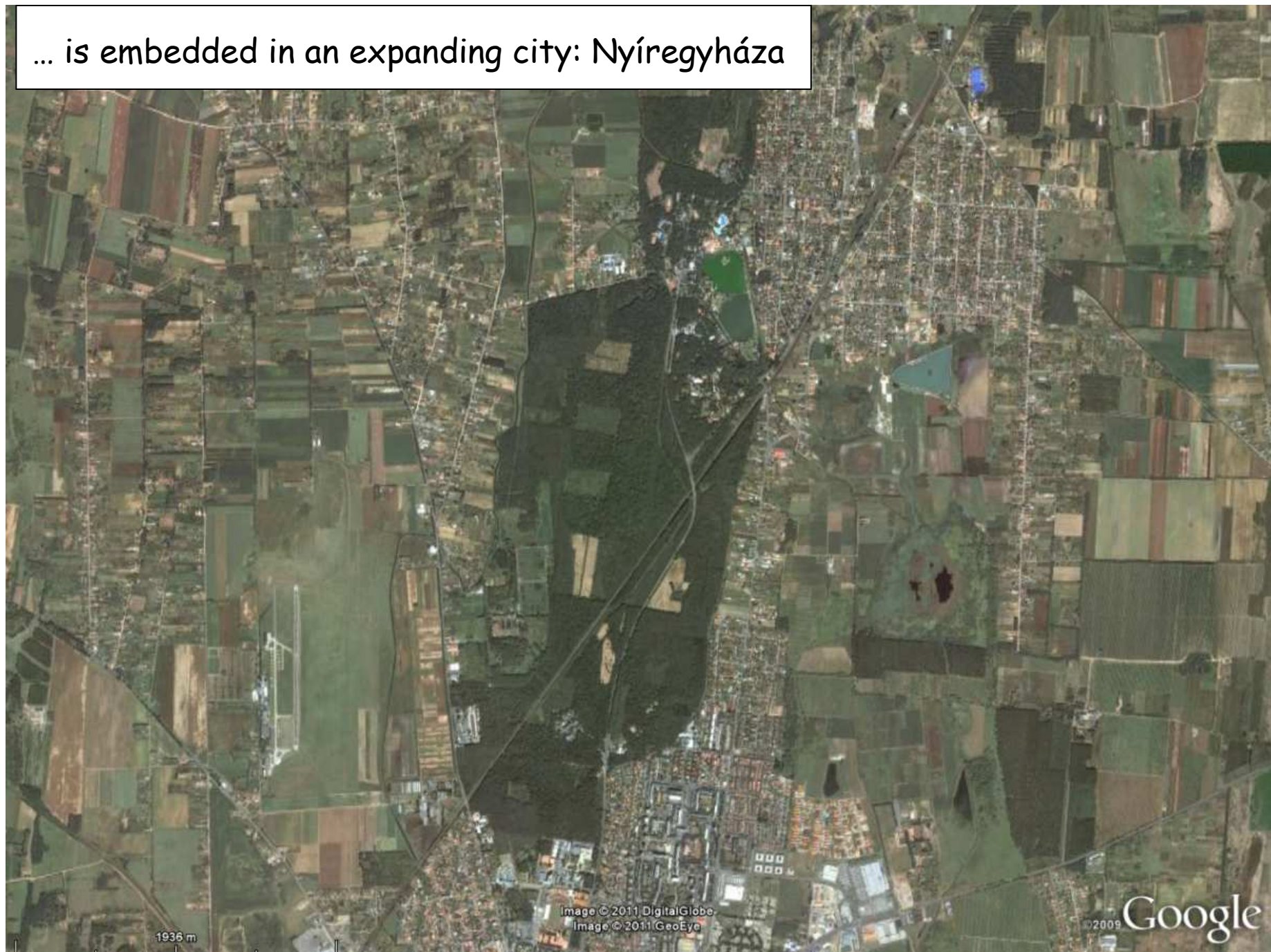
The northest Pannonian sand steppe oak forest ...



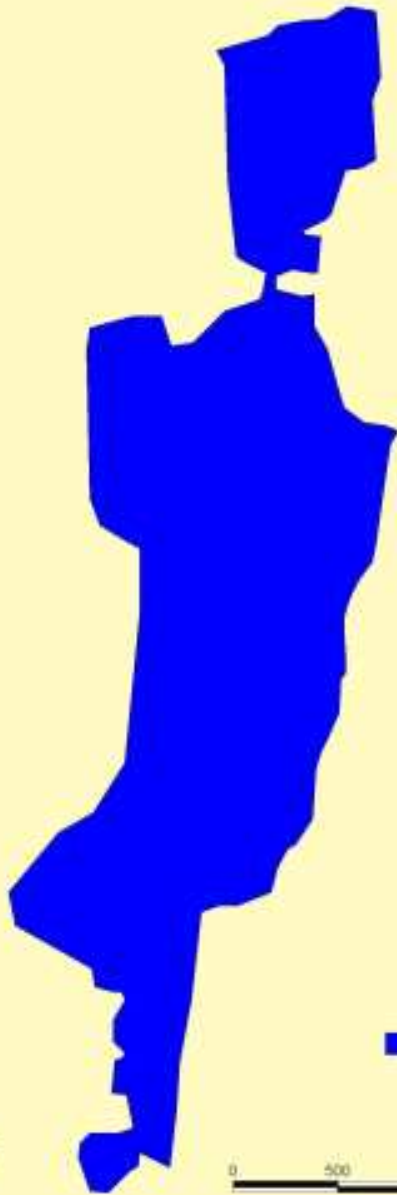
A MÉTA adatbázis 1.2 alapján  
szerkesztette a MÉTA Informatikai munkacsoport  
MTA Ökológiai és Botanikai Kutatóintézete  
Vácrátót, 2008. november



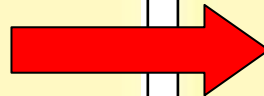
... is embedded in an expanding city: Nyíregyháza



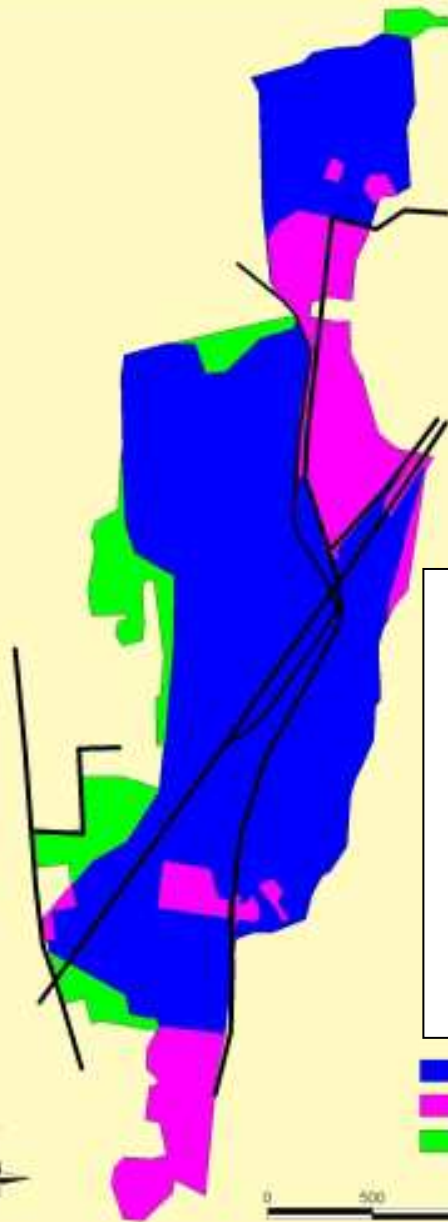
Since the last  
150 years ...



■ "Original" area (1858)



... it has lost  
one third of  
its area and  
become  
very, very  
fragmented.



■ "Original" area (1858)

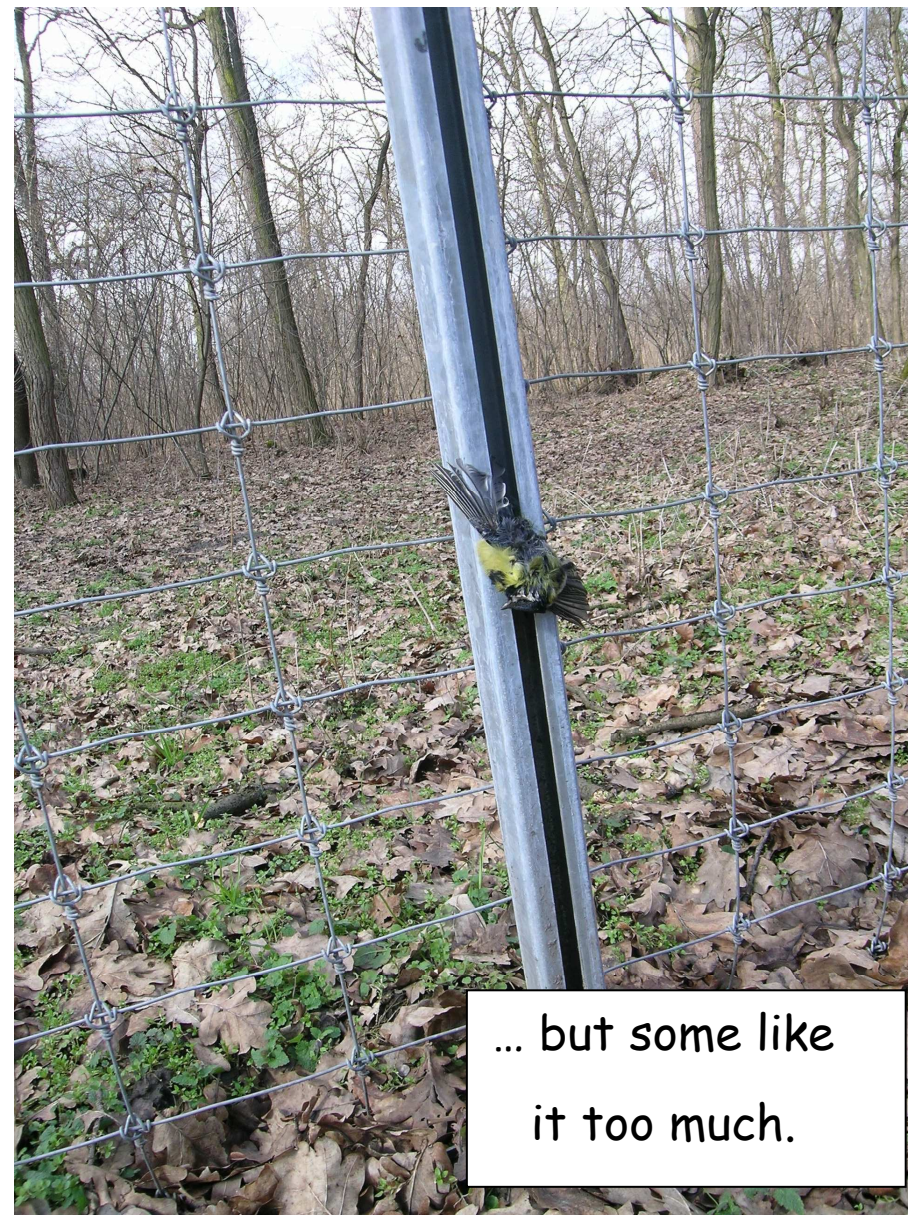
■ Area lost

■ Area gained





Citizens like  
the forest ...



... but some like  
it too much.



Yet miraculously the „Sóstói-erdő” is still rich in treasures of Nature...



... mostly  
those specific  
to closed  
mesophyllous  
woodlands...



... but there are also some refugia of forest-steppe habitats





... and plenty of dead wood and a lot of old oak stands.





So most of the the forest became a Natura 2000 site

Very nice!



But what about the problems? Let' see...



Are they principal problems or just symptoms of some general negligence or ignorance?



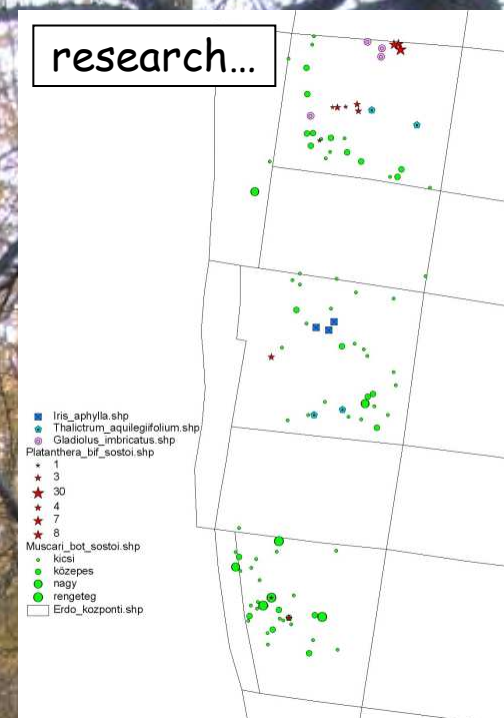
NGOs are optimistic, so we tried to do what we thought was missing in dealing with „Sóstói-erdő”.

consultation with stakeholders...



lobbying to make a nature reserve...

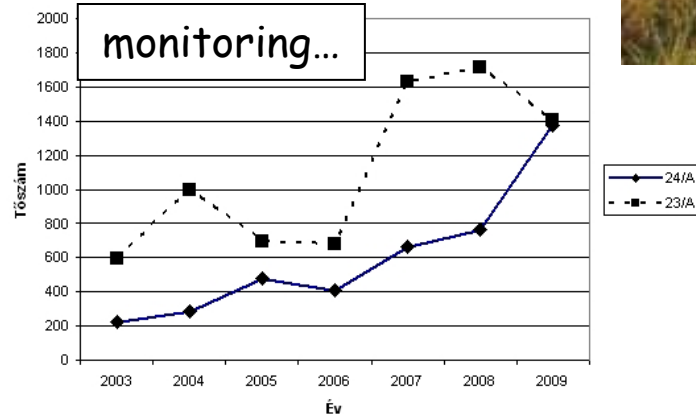
research...



media...



monitoring...

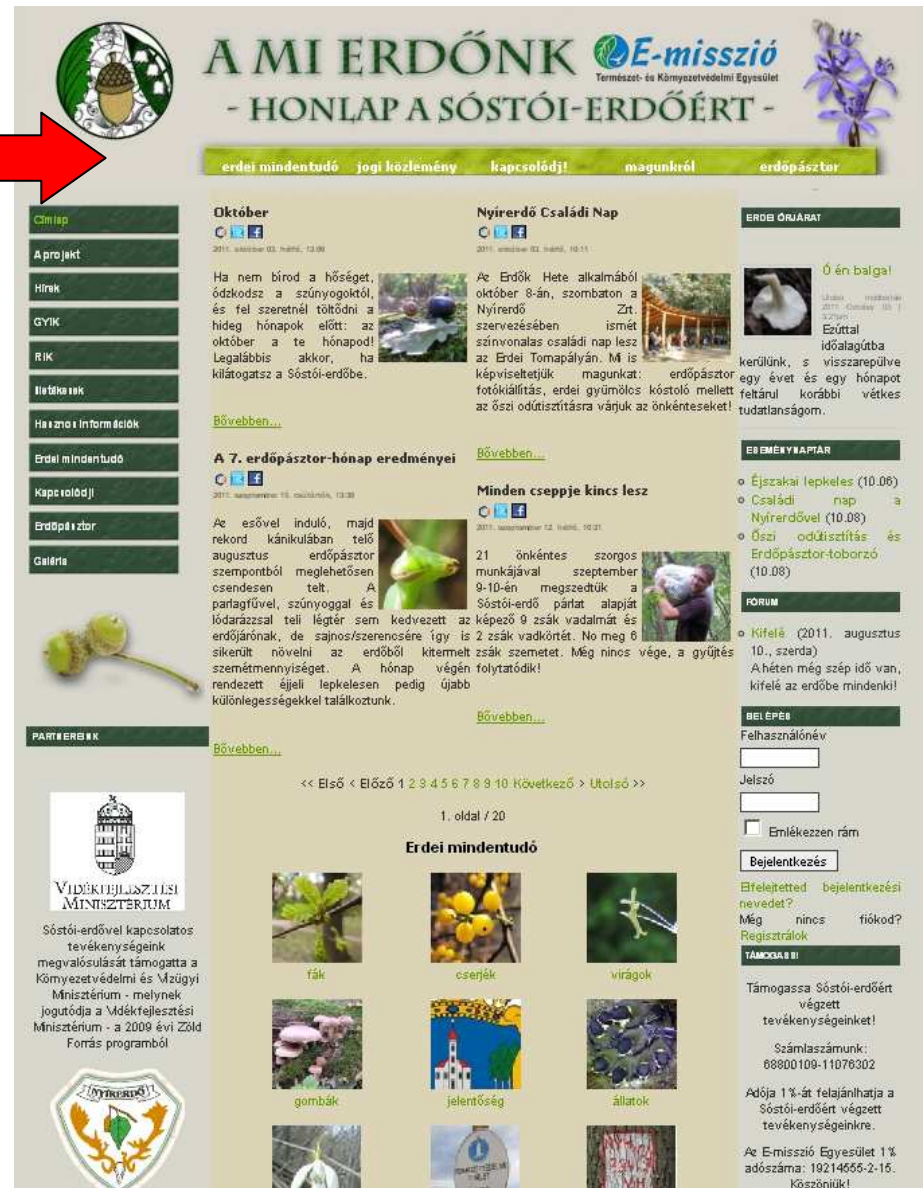




After a while we found, that we cannot „save” the forest without the people

so we made a web page about the forest...

... and started a campaign to involve the citizens to different activities for the forest





After a few months we had dozens of volunteers attending the programs!

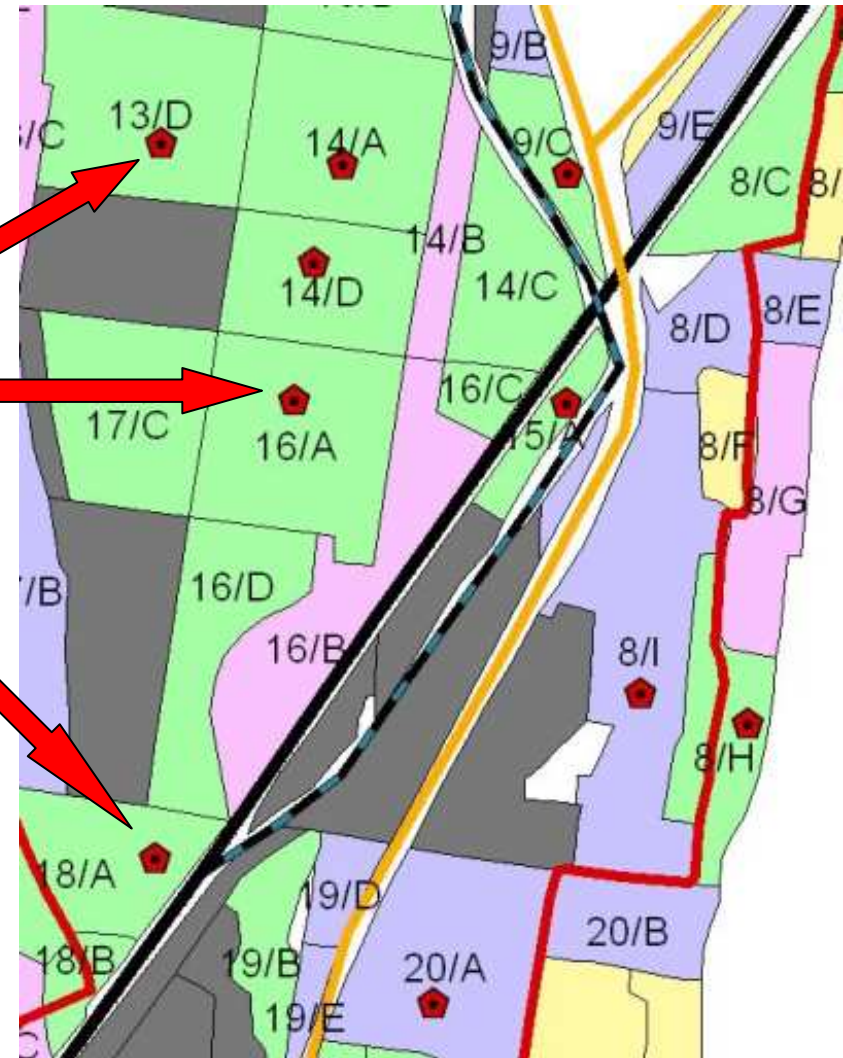
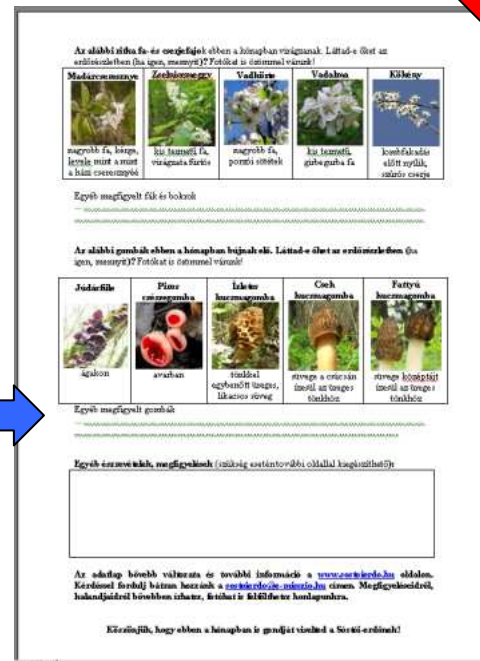




In 2011 we started the „Forest Shepherd” project.

It was something new:  
Each „Forest Shepherd” has  
a little piece of the forest  
to look after regularly...

...following  
our monthly  
instructions  
and aids.

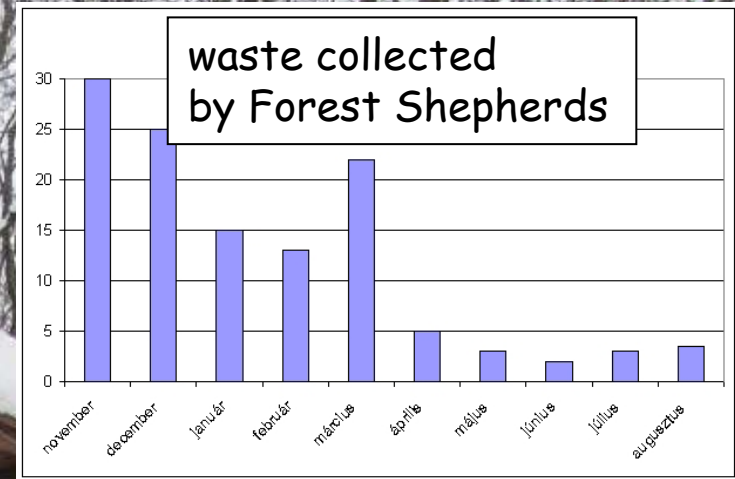


Finally they report to us every month.



It seems to work. More people to count on!

new biotic data,  
unexpected discoveries



more people involved  
in collective activities



increasing  
web 2.0 activity



high quality artistic photos and  
pictures by Forest Shepherds





Meanwhile a lot have changed in forest management



more regular consultation  
among forest management and  
conservation bodies and NGOs

black locust stands turned to oak



close-to-nature forestry experiments



smaller clearcut areas



A photograph of a snowy landscape with bare trees. A bright light source, possibly the sun, is visible through the branches, creating a strong reflection on the snow. The scene is captured in a slightly blurred, artistic style.

This is just the beginning!

Thank You!